

Kane County Farmer



MISSION STATEMENT:

Enhance the quality of life for member families,
promote all aspects of agriculture
and advocate good stewardship of our land and resources.

VOL. 73 NO. 3 MARCH 2008

Readership surveys sent to members

Kane County Farmer readership surveys were sent recently to 500 members at random seeking their input in helping us make this publication more informative, interesting and relative to their interest. If you received a readership survey and have returned it, we thank you for your input.

For members who did not receive the survey and would like their opinions included in the report to the Board of Directors, please contact our office at 630-584-8660 and we will send a survey to your mailbox.

CALENDAR OF EVENTS

- March 4**
SPROUTS Volunteer Meeting, 6:30 p.m., Salerno's, St. Charles
- March 4-6**
IFB Leaders to Washington
- March 5**
IFB Region 2 Meeting, 10 a.m., Countryside
- March 6**
Board of Directors, 7:30 p.m.
- March 9**
Hampshire FFA Banquet, 1:00 pm, Hampshire High School
- March 10**
Market Outlook Breakfast, 7:30 a.m., Papa G's, Elburn
- March 12**
Women's Committee Meeting, 9:15 a.m.
- March 13**
Ag Days Student Bag Stuffing, 4-7 p.m.
- March 14**
Foundation Board Meeting, 8 a.m.
- March 17**
Ag Days Set-Up, Mooseheart
- March 18-20**
Ag Days at Mooseheart
- March 19**
Corn Growers Annual Meeting, 6 pm, Fishermen's Inn
- March 24**
Frozen Food Orders pick-up
- March 28**
Touch-A-Tractor, 9 a.m.-5 p.m.
- March 29**
Touch-A-Tractor, 10 a.m. - 4 p.m.
- March 29**
Agriculture's Tribute to Dennis Hastert, Museum of Science & Industry, Chicago

All meetings are at the Farm Bureau, 2N710 Randall Rd., St. Charles, unless otherwise noted.

Food pantries win in 7th annual 'Challenge' spree

The 7th Annual Food Check-out Challenge was held February 8, 2008 at Jewel-Osco in Batavia. The "Challenge" pitted 43rd District State Representative Ruth Munson and 16th Circuit Judge Patricia Golden against each other in a 6 minute shopping spree for local food pantries. Both contestants were cheered on by Batavia High School cheerleaders.

Golden collected over \$574 in groceries to benefit the Community Crisis Center of

Elgin and Munson gathered over \$926 in groceries for All People's Interfaith Food Pantry, also of Elgin. They were assisted in their "Challenge" by Lisa Sampson and Joann Wesner, respectively, representatives of

the recipient food pantries. Farm Bureau volunteers and Jewel-Osco employees wore specially made shirts representing each of the competitors and assisted in the shopping spree by swapping the filled carts with empty ones.

The \$1,500 worth of food gathered in the allotted time was

purchased by the Kane County Farm Bureau and donated to the respective food pantries. In the seven years since its inception, every State Legislator who resides in or has an office in Kane County has participated in the event and collectively they have gathered over \$12,000 in groceries, all purchased by KCFB for local food pantries.



Left: KCFB Treasurer Joe White of Elburn unloads one of seven shopping carts laden with groceries as State Representative Ruth Munson (background) rings up her purchase in the 7th annual Food Check-Out Day shopping spree.

Right: 16th Circuit Court Judge Patricia Golden scans items at the cash register following the Shopping Spree. Golden's efforts led to \$574 in groceries for the Community Crisis Center of Elgin. More Food Check Out Day images are on page 4.

Allendale VP to provide commodity outlook for Kane Farmers

The Marketing Committee of the Kane County Farm Bureau has announced its plan to host a spring commodity market outlook breakfast. The Committee has confirmed that Joe Victor, V.P. of Market Research for Allendale Inc. will be the featured speaker.

Victor is recognized as a top industry expert in his role with Allendale, one of the largest commodity research advisory firms in Mid-America. Victor is responsible for conducting research on grains and

livestock in order to provide the worldwide data needed to inform and guide clients. He has experience in conducting historical, statistical and analytical research on the agriculture industry and consultancy services in agriculture, natural gas and

precious metals.

The Market Outlook program is scheduled for 7:45 a.m., Monday, March 10 at Papa G's in Elburn. It will begin with a breakfast buffet and be followed by Mr. Victor's market analysis. Cost for the breakfast and program is \$15.00 for non members, \$12 for associate member and \$7 for farmers. Reservations are requested by March 7 and can be made by calling the Kane County Farm Bureau at 630-584-8660.

COME GET YOUR FILL OF FOOD AND FUTURES!

Call the Kane County Farm Bureau at 630-584-8660 by March 7 to reserve your spot for this outstanding program.

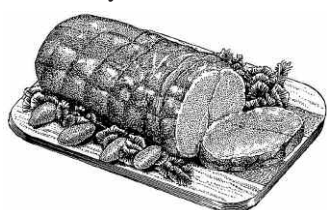
Speaker Joe Victor



PECANS
50% OFF SALE.
FIRST COME,
FIRST SERVED
WHILE SUPPLY
LASTS!

MARCH SPECIAL Stuffed Pork Tenderloins

The special for March is Stuffed Pork Tenderloins. These tenderloins are stuffed with a fabulous homemade cornbread stuffing with sundried tomato and roasted garlic. Each box will contain two stuffed tenderloins, individually wrapped and weigh a minimum of 3 1/2 lbs. We are selling each delicious box for \$16.50 to M or A+ members, and \$17.50 to A members. Perfect if you are looking for something other than ham to serve for your Easter dinner!



Members invited to Ag Days

The Kane County Farm Bureau Women's Committee will sponsor Ag Days March 18-20 at Mooseheart Fieldhouse. Now in its 24th year, this annual agricultural literacy program will host over 2,000 Kane County 4th grade students.

During their visit to Mooseheart, students will hear a score of presentations on agricultural topics, see

livestock and farm machinery and receive "gift" bags with farm-related lessons, activities and favors.

Any Farm Bureau members interested in seeing and/or volunteering for Ag Days is welcome to attend. Please consider being a part of this great tradition. Perhaps, in the process, you'll learn something you didn't know about agriculture. Contact the Farm Bureau today at 630-584-8660 for additional information.

Over 2,000 Kane County 4th grade students will learn about agriculture, natural resources, nutrition and farming at the 24th annual Ag Days, March 18-20 at Mooseheart. In file photos from last year, students learn about pioneer life (l) from a docent at Garfield Farm and hear about the USDA food guide pyramid (l) from the Kane County Health Department. FB members are welcome to attend the event to learn more about where their food and fiber originates. Call 630 584-8660 for more information.

FB announces 2008 bookmark contest

"Agriculture in Illinois" is the theme for the 2008 bookmark contest. The contest is open to all 4th grade students in Kane County with prizes offered to first, second and third place winners and an Agricultural Literacy presentation and treats for that student's classmates.

According to Ag Literacy Coordinator Suzi Myers, contest notification will be sent to all 4th grade teachers in March. Teachers whose schools attend Ag Days at Mooseheart will hear about the contest first hand

from Ag Literacy volunteer Nancy Meyer. All others will be notified by direct mail.

Students are asked to research an aspect of Illinois agriculture and draw a simple bookmark about that topic. Criteria for judging by the Farm Bureau Women's Committee will include neatness, spelling, creativity and clear and accurate information. For home schoolers, a printable pdf copy of the bookmark is available of the Kane County Farm Bureau website at www.kanecfb.com

Teacher mailings includes a few Illinois agriculture facts including:

- Soybeans and corn are the leading crops in Illinois.
- Pumpkins and horseradish are the state's leading specialty crops.
- Illinois ranks 7th in pork production in the U.S.
- Illinois is one of the top producers of popcorn.

Over 500 entries are expected in the annual contest. For more information, contact Suzi Myer at 630 584-8660.

HEA news

The Plato Center HEA will meet on Friday, March 14, 2008, at 1:00 p.m. at the Plato Center Township Hall, 10N924 Rippburger Road. At 9:00 a.m., ladies will meet to do the cough pillows for Provena St. Joseph Hospital. Everyone looks for-

ward to this annual event. We will work until noon, stop and have our lunch. The lesson will be "Diabetes Prevention Diet."

Anyone interested in joining this meeting or any other meeting may call Joan at (847) 931-8120.

Young Farmers attend IFB Young Leader Conference

Representatives of the Kane County Farm Bureau Young Farmers recently attended the Illinois Farm Bureau Young Leader Conference in Springfield. The two-day conference featured sessions that focused on various agricultural topics and provided an opportunity for Kane County Young Farmers to meet other young agricultural leaders from

throughout the state. The attendees also had the unique opportunity to discuss how agriculture differs throughout the state.

Young Leader programs are for Farm Bureau members 18- 35 who have an interest in the future of agriculture. For information on local Young Farmer programs and activities, contact the Farm Bureau at (630) 584-8660.

KCFB takes lunch to legislators

KCFB and Kane County Corn Growers volunteers arranged visits with local legislators and the office staff of U.S. Senator Richard Durbin on Monday, February 11, 2008, to recognize the role of policymakers in the affordability of food.

The volunteers delivered boxed lunches from Heavenly Ham, in Food Check-Out Day totes, to each office for the public officials and their staff. They also brought farm facts about Illinois and U.S. agriculture, the Farm Bureau's 2008 Policy Resolutions, and several Farm Bureau publications.

The volunteers were able to meet with 46 legislators and legislative aides to present a posi-

tive, professional and pro-active image of farmers in the 6th year of this Food Check-Out - Legislative Relations program. Kane County Farm Bureau thanks these volunteers for their commitment to improving our visibility and access to elected officials for the benefit of all farmers.



KCFB Govt. Affairs Committee Chair Steve Pitstick (l) of Maple Park shares a laugh with staffers Kathleen Rooney and Michael Daly in Senator Durbin's downtown Chicago office on February 11. Pitstick and FB President Bob Gehrke visited the Senator's office with 27 lunches for staff members. They reported that the Senator is interested in scheduling another "tool shop" meeting with Kane County farmers in 2008 as a result of the program.

Kane County Corn Growers news

Corn Growers to hold Annual Meeting

The Annual Meeting of the Kane County Corn Growers will be held Wednesday, March 19 at the Fishermen's Inn corner of Rt. 47 and Main Street Road.

The meeting will begin with a social hour and cash bar at 6:00 p.m. All Corn Growers members are invited to attend.

Following a 7:00 p.m. buffet meal and brief business meeting, guests will be treated to the

comedy of humorist Mike Green. Cost for the meeting and meal is \$10 per member.

Reservations for this evening of fun and camaraderie are requested by March 15 and can be made by calling the Kane County Farm Bureau, 630 584-8660.

Kane County Corn Growers Scholarship Opportunities

The Kane County Corn Growers will be offering multiple scholarships worth \$750 each to students whose parents are members of the Kane

(continued on page 7)

Garfield Farm Museum fundraiser in March

Garfield Farm Museum in La Fox will assist with the Fox Valley Antiques Show March 8 and 9. The show runs on Saturday from 10 a.m. to 6 p.m. and Sunday from 10 a.m. to 4 p.m. at the Kane County Fair Grounds, between Routes 38 and 64 in St. Charles. The antique show will host 55 dealers from 14 states and

will feature "Live Green Buy Antiques" produced by Chicago Suburban Antiques Dealers Association. The Antiques Show will benefit Garfield Farm Museum. Parking is free, and admission is \$8. Food will be available for lunch. For more information, visit www.csada.com or call (815) 838-0606.



You receive the *Kane County Farmer* because you are a Farm Bureau member. If you are a farm operator or owner, you benefit from a local, state and national organization committed to agriculture and your way of life.

If you do not have direct ties to farming, your membership helps promote local farms and farming, encourage wise use of our limited natural resources and preserve farmland and our agricultural heritage while allowing you to enjoy COUNTRY insurance and the many other benefits of one of Illinois' premier membership organizations.

We appreciate your membership and continued support and we welcome your comments on the content of the *Farmer*. We encourage you to make recommendations about farm, home, food, natural resource, renewable energy or agricultural heritage and history related topics for inclusion in future issues of the *Farmer*.

Don't miss our
FROZEN FRUIT & VEGETABLE SALE
plus much more flavorful food for your freezer!
See page 8 for details

Farm Bureau Board Attendance Sept. 2007 - August 2008

	SEP	OCT	NOV	DEC	JAN	FEB	MAR	APR	MAY	JUN	JULY	AUG
R. Biddle	X	X	X			X						
B Collins	*	X	X	X	X	X						
C. Collins	X	X	X	X	X							
B. Engel	X	X	X		X							
G. Feldott	X		X	X	X	X						
G. Gaitsch	X		X	X		X						
R. Gehrke	X	X	X	X	X	X						
M. Kenyon	X	X	X	X	X	X						
W. Kuipers	X	X		X	X	X						
D. Lehrer	X	X	X		X							
A Lenkaitis, Jr.	X		X		X							
M. Pitstick	X		X		X							
W. Schneider	X		X	X	X	X						
A. Volpp	X		X	X		X						
J. White	X	X	X	X	X	X						

** Attending the Farm Bureau Leaders to Washington program*

Kane County Farmer KANE COUNTY FARM BUREAU PUBLISHED MONTHLY

Steven J. Arnold, Editor

Merry Pitstick, Executive Assistant
Suzi Myers, Ag Literacy Coordinator
Elizabeth Dawson, Membership Secretary
Tracy Windett, Information Director
Audre Pack, Training Specialist

OFFICE: Randall Rd. between Routes 64 & 38
Address: 2N710 Randall Rd., St. Charles • PHONE: 630-584-8660
info@kanecfb.com www.kanecfb.com

OFFICE HOURS: 8:30-5:00 Monday through Friday
(USPS No. 289700)

POSTMASTER: Mail form 3579 to
2N710 Randall Rd., St. Charles, IL 60174

Second Class Postage • Paid to St. Charles, IL 60174
Year Subscription: \$2.00

<p>■ DISTRICT 1 Aurora, Sugar Grove, Big Rock Twnshp. Gene Feldott Rt. 3, Box 425 Aurora, IL 60506 630-892-2197 Mike Pitstick 1708 Hannaford Dr. Sugar Grove, IL 60554 630-878-3975 Donna Lehrer 7S027 Jericho Road Big Rock, IL 60511 630-556-3476</p>	<p>Joe White Secretary-Treasurer 47W727 Main St. Rd. Elburn, IL 60119 630-557-2517 ■ DISTRICT 3 Virgil, Campton, St. Charles Twnshp. Robert Biddle 4N566 Whirlaway Dr. Elburn, IL 60119 630-365-9374 Chris Collins P.O. Box 62 Wasco, IL 60183 630-513-5833 Al Lenkaitis, Jr. 6N352 Fair Oaks Dr. St. Charles, IL 60174 630-561-9514 ■ DISTRICT 4 Burlington, Plato Elgin Twnshp. Alan Volpp 9N728 Peplow Rd. Hampshire, IL 60140 847-683-3681</p>	<p>Mike Kenyon Vice President 1250 E. Main St. South Elgin, IL 60177 847-741-1818 Robert Gehrke President 12N860 Route 20 Elgin, IL 60123 847-697-2538 ■ DISTRICT 5 Hampshire, Rutland, Dundee Twnshp. Beth Engel 15N638 Walker Road Hampshire, IL 60140 847-683-3482 Gerald Gaitsch 10613 Brittany Ave. Huntley, IL 60142 847-669-2003 Wayne Schneider 402 S. 5th Street West Dundee, IL 60118 847-428-3350</p>
---	--	--

SPRING MARKET OUTLOOK BREAKFAST

Monday, March 10, 7:45 a.m.
Papa G's Restaurant, Route 47 Elburn

Guest Speaker: Mr. Joe Victor
V.P. - Marketing, Allendale Commodities

*An in-depth look at
2008 commodity markets
from a recognized and respected
industry expert.*

\$7 for Kane County Farm Bureau
"Farmer" members

\$12 for "Associate" and other
county Farm Bureau members

\$15 for non-members

WOMEN'S CORNER

By Louise Johnson
Women's Committee Chair



If you do not eat meat in Lent, you can substitute a crumbled soy product, which looks like crumbled ground beef, in many recipes. It is in a bag in the meat-substitute case in your grocer's frozen food section. Until you have used this a few times and gotten used to it, you should watch your food as you cook. This product can cook differently than meat, such as absorbing liquids. Who knows, some soybeans grown in Kane County may be in your supper.

In February, we celebrated Food Checkout Day. It takes less than six weeks for the average American worker to earn enough disposable income for one year's worth of groceries for the family. For comparison, it takes four months, until the end of April, for the same person to earn enough to pay all of the family's taxes, according to The Tax Foundation. See page 4 in this paper for coverage of the 2008 Food Checkout Day.

Currently there is a push to repeal NAFTA, the North American Free Trade

Agreement, because activists say it is causing U.S. corn imports to hurt small Mexican farmers. However, U.S. corn, used in feed and ethanol, is yellow field corn. In Mexico, white corn is grown for use in flour tortillas.

Do you have a MacBook® or a MacBook Pro®? Did you know that the warranty on the battery has been extended to two years? In case the tech you contact does not know about this extension, direct her/him to http://www.apple.com/support/exchange_repair/.

Have you seen the new Kane County Farm Bureau website? Go to www.kanecfb.com to see information about Kane County farms, find local produce or learn more about farm Bureau events, activities and membership benefits.

My youngest daughter, Susan, was in China recently, where she visited the Great Wall. She walked 10 kilometers on a partially restored section of the Great Wall, from Jinshanling Park to Simatai Park. Most of the Great Wall is

KANE COUNTY FARMER

in ruins and scattered, the same color as rocks and boulders in the surrounding countryside, and the width of a double lane road. You have all heard that the Great Wall can be seen from space. However, since it is so narrow and the ambient color, can that be true? It would seem that seeing it from space would be like seeing a black hair on asphalt from the second floor of a building. (I did not do the math, but you can if you are ambitious.)

Here is a winter "comfort" food for breakfast or brunch that Susan likes to make.

Susan's Banana Buttermilk Pancakes

1 c. flour
1 T. sugar
1 tsp. baking powder
1/4 tsp baking soda
1/4 tsp salt
1 beaten egg
1 cup buttermilk (or sour milk made by adding 1T. lemon juice to about a cup of milk. Make this at the beginning so it sits & sours while you make the other items.)

2 T. cooking oil
1 mashed banana – mash & leave a little lumpy

1. Combine flour, sugar, baking powder, baking soda, & salt. Combine egg, milk, & oil. Add egg mixture all at once to flour mixture. Stir just until moistened. With a few more stirs, mix in bananas. (Batter

should be lumpy.) Additional buttermilk may be added to thin, if necessary.

2. Pour or spread about 1/4 cup batter into a 3-inch circle onto a hot, lightly greased griddle or heavy skillet. Cook over medium heat about 2 minutes on each side or until pancakes are

golden brown, turning to second sides when pancakes have bubbly surfaces & edges are slightly dry. Turn only 1 time. Serve warm.

Whole wheat flour may be substituted for the regular flour; however, then substitute brown sugar for the regular sugar.

Food pantries meet at FB

Food pantry representatives in the Kane-Kendall Regional Anti-Hunger Network met at the Kane County Farm Bureau Meeting in mid-February. The meetings are coordinated by the Northern Illinois Food Bank to network, find out what food pantries have been doing to promote their services, hear concerns of food pantries and to develop hunger solutions.

Lisa Scott, Regional Field Representative from the Northern Illinois Food Bank (NIFB), discussed the Summer Lunch Program for children, the upcoming Annual Agency Conference to be held March 28, and goals the NIFB has for Kane and Kendall Counties for 2008.

Erik Gauss of Cross Evangelical Lutheran Church in Yorkville presented information about Angel Food Ministries. This organization collaborates with churches and community organizations to help distribute

food to those in need. The organization offers a monthly menu for people to purchase and then pick-up on a given day. For a food pantry to participate, the pantry must be affiliated with a church. For more information about Angel Food Ministries, you may visit www.angelfoodministries.com.

Food pantry representatives also discussed the nutrition title of the Farm Bill and heard a presentation about the role of the Farm Bureau in representing local farmers and the association's contributions to hunger relief and hunger awareness activities.

The Anti-Hunger Network will meet quarterly throughout 2008 at the Kane County Farm Bureau. For more information about the Network or local hunger relief efforts, contact the Northern Illinois Food Bank at (630) 443-6910 or visit www.northernilfoodbank.org.

Illinois Agriculture's tribute to former House Speaker Hastert

Former Speaker of the House Dennis Hastert of Plano will be honored for his 27 years of public service to Illinois agriculture during a Tribute dinner, scheduled for Saturday, March 29 from 6:00-10:00 p.m., at the Museum of Science and Industry, Chicago.

The event, hosted by Illinois Farm Bureau, IAA Foundation, and the Museum, will benefit Illinois Agriculture in the Classroom programs and the Chicago High School for Agricultural Sciences.

"Speaker Hastert has always been a good friend to agriculture, so it seems quite appropriate that those in agriculture come together to honor him," says IFB

President Philip Nelson.

Besides the dinner and program, attendees will have the opportunity to experience four of the Museum's exciting and innovative exhibits including the newly updated and expanded agricultural exhibit, Farm Tech. Other exhibits will be available that evening, including the Great Train Story, Toymaker 3000, and the Coal Mine that has just reopened following a major renovation.

Attendees can select several levels of sponsorships:

- For \$125, participants can attend the dinner and open reception.
- Those attending as a \$275 Tribute VIP will receive one

dinner and a VIP Reception reservation, photo with Speaker Hastert, your name listed in the program booklet, preferred reserved seating, and an autographed copy of the Speaker's autobiography.

- Those attending as a \$500 Tribute VIP will receive two dinners, and the other rewards listed above.
- Tables for 10 are available by calling the IAA Foundation office at 309-557-2230.

Those wishing to attend the event must RSVP by March 13, 2008 to the IAA Foundation, or register online at: www.iaafoundation.org. For additional information, contact the IAA Foundation at 309-557-2230.



Representatives of local food pantries met at the Farm Bureau in St. Charles in mid-February to plan strategies for feeding the hungry in the area.

Farm-n-Food news clips

A glimpse at recent agriculture and food news headlines and the growing use of farm crops for energy.

Safeway and Dominick's to use Biodiesel in Their Fleets

Safeway, Inc., the nation's third largest grocer is shifting their fuel choice to a 20 percent blend of biodiesel. Dominick's, which is prominent in the Chicago

area, is owned by Safeway and will begin burning biodiesel. Dominick's fleet consists of 78 tractors and 350 refrigerated trailers. The shift to biodiesel will reduce Safeway's carbon emissions nationally by 75 million pounds per year – equivalent to taking 7500 passenger vehicles off the road. Safeway is a member of the Chicago Climate Exchange and the only retailer in the program. The Exchange is a trading system for the reduction of greenhouse gases.

Food Trends – The Whole Foods Market chain has announced that it will stop offering plastic grocery bags, giving customers instead a choice between recycled paper or reusable bags. A rising number of governments and retailers are banning plastic bags, or discouraging their use, because of concerns about their environmental impact.

Abuse & Neglect – Major media outlets across the nation have reported on the rise in abuse and neglect cases involving horses since a ban on horse processing took effect in early 2007. The Chicago Tribune, Coeur D'Alene Press, Portland Oregonian, Austin American Statesman, Seattle Times, Washington Post, Wall Street Journal and UPI have chronicled cases of this animal welfare crisis from across the nation including Illinois, Idaho, Oregon, Texas, Washington, Colorado, Virginia, Alabama and Florida.



Need More Storage?

We Can Help.

Our competitive rates and flexible repayment plans can turn whatever you imagine into a reality. We know every farm has different needs so we developed the largest variety of facility loan and lease options available ... each one tailored to custom fit the specific needs of your operation.

Your 1st Farm Credit Services financial professionals will help you choose the right product for your farm. So if you think this is the time to add that new facility or even refinance an existing one, talk to us.

If you can imagine it, we can make it happen.

Sycamore
1-800-766-3276

 **1st Farm Credit Services**
AT THE HEART OF A GROWING AMERICA

Dear Mr. Arnold and members of the Kane County Farm Bureau:

We here at the All Peoples Interfaith Food Pantry want to thank you for giving us the opportunity to participate in the Food Check-Out Day.

The food that Representative Munson collected for our pantry was wonderful. Our shelves are looking real good now. Each family that visits us is given 3 days food for each family member and they can visit us 6 times a year. In the year 2007, we served over 8,000 families, so as you can see we use a lot of food.

Thank you again from the bottom of our hearts.

Sincerely,

Joan Wesner

Manager
& the Board of Directors
All Peoples Interfaith
Food Pantry



Shopping Spree Thanks

Dear Mr. Arnold:

On behalf of the Board of Directors, clients and staff of the Community Crisis Center at George Van De Voorde Place, please accept our heartfelt appreciation for your donation on February 8, 2008, of groceries valued at \$575 to stock our Emergency Food Pantry. It was an honor to be represented by Judge Patricia Piper Golden; the food collected by Judge Golden during the shopping spree at the Batavia Jewel-Osco will feed scores of people who use our pantry on a regular basis.

The Community Crisis Center at George Van De Voorde Place provides 24-hour caring and professional services in response to requests from individuals and families affected by domestic violence, sexual assault, homelessness and other crisis situations. Our services include a 24-hour crisis hotline, a shelter for 40 women and children, individual and group counseling, financial assistance, partner abuse intervention, and legal, medical and welfare advocacy. Founded by volunteers in 1975, the Crisis Center has grown to serve over 6,000 people each year.

The Crisis Center is fortunate to be associated with individuals and businesses that partner with us to meet the needs of individuals and families in crisis; together we can make a difference in the lives of others.

Sincerely,

Gretchen S. Vapnar
Executive Director

SPRING CAN'T GET HERE FAST ENOUGH

By Tracy Windett



Enough snow? Enough said. I am ready for sunshine, warm weather and seeing leaves on the trees again.

Spring is a time to start fresh. Budding flowers and baby animals are a great example. I am excited about the baby chicks that will be in the Farm Bureau office during Touch-A-Tractor. There's something about birds chirping that makes everything

brighter.

I am ready for the smell of fresh-cut grass, the scent of a recent rain shower, or the fragrance of spring flowers.

I am ready to feel warm air blow through my hair. I can't wait for the chance to put away my thick winter coats and cozy sweaters until next winter. My flip-flop collection is calling my name, too.

has returned for visits, which gave her a second chance to appreciate the peace and beauty of her daughter's new home far outside the city limits.

Late winter has farmers and country residents looking forward to greener days. The temperature bounces between freezing and thawing. Then snow melts, which exposes last year's browned roadside grasses, creates boot-sucking mud and shows any other color similar to what happens when my 2-year-old daughter dips her paintbrush in every watercolor before touching the paper. That same color is painted on our minivan and pickup truck. The vehicles are filthy enough to make most car wash-bound motorists feel unworthy.

"You can grow grass on the side of this truck," my husband said on an abnormally warm 65-

I'm ready to get out and move around. I want to ride my bike, take a walk on some trails, run for miles!

I'm ready to eat ice cream and not shiver inside and out! I'm ready to go on picnics, eat dinner outside, and roast marshmallows during a bonfire.

All of these things seem miles away. Bright blue sky, warm yellow sunshine, and dark green grass can't reappear soon enough.

Of course, once the temperatures reach 100-plus degrees in a couple months, this cold weather won't seem so horrible. Until then, I'll be longing for that weather!

degree day recently. We were among 10 vehicles waiting in a local car wash line, except we were the only vehicle that appeared to have found a mud road to test the four-wheel drive. In reality, we had driven to the family farm a few times. We waited at the stall nearest the coin machine, so every quarter-less person could have walked by our truck and autographed it. We spent 23 minutes washing the truck, long enough to make the person behind us vacuum his floor mats.

Country road surfaces vary, but farmers break them into two main categories: hard surfaces and gravel. The latter perhaps is the most romanticized of basic rural living, but also is the messiest. In late winter, you need only drive a mile on these soft, thawed roads to coat the

(continued on page 8)



Assisted by Farm Bureau directors Gene Feldott of Aurora (r) and Alan Volpp of Burlington (l), the Representative was never in danger of running out of shopping carts.

Food Check-Out Challenge

With hands flying and boxes falling, State Representative Ruth Munson rushes to fill another shopping cart. In six minutes, Munson collected nearly \$1,000 in groceries for the All Peoples Interfaith Food Pantry of Elgin.



After the February 8 event, the competitors, together with their helpers from the food pantries, gather to receive their trophies and congratulate one another for a job well done. While Farm Bureau uses Food Check-Out Day to mark the day when the average American family has earned enough food to pay for groceries for one full year, the organization has, with a great deal of help from local public officials, used the occasion to do a great deal of good with this annual "competition" to benefit local food pantries.



Farm Gate

by *Joanie Stiers*

Late winter in Illinois farm country is like Mother Nature's ninth month of pregnancy. She is uncomfortable, emotional and craves salt-tinged, sloppy roads until she gives birth to the beauty of tulips, budding trees and green grass of spring.

The scenic reasons to join rural Illinois country living are plentiful. Among my favorites are the sight of flickering lightning bugs above a corn field on a summer evening, the smell and colors of fall harvest, frozen fog on winter's leafless trees, and the spring calves prancing outside Grandma's kitchen window.

But Mother Nature shows rural Illinois' imperfections in late winter, when scenes turn ugly and conditions uncomfortable. For this reason, I became concerned two years ago when the first farm visit for my brother's suburban mother-in-law-to-be would be in late winter. She still allowed the marriage and

Beef store is now open!
Sat. 9-4 or by appointment

*farmdirect***BLACKANGUS.com**

100% hormone free beef.
Selling individual cuts. Buy as little or as much as you want.

Mark & Linda Schramer, Owners
8N840 Lakin Road, Maple Park
815.895.4691 • 1-877-FOR-FDBA

Sample Packs make great gifts!

**Cleaner Engines,
Better Performance**

AkroGold
High Detergent Gasoline

Available Exclusively at Conserv FS, Inc.
(800)924-9942 • www.conservfs.com



Farm Facts @ Fun

Compiled by Beth Dawson and Tracy Windett



Tractor Facts

“horsepower.” If a tractor has a 250-horsepower engine, it has the pulling power of 250 horses.

- Farm tractors are used for plowing, tilling, harrowing, planting, and pulling or pushing agricultural machinery or trailers.
- Tractors come in different sizes for different jobs. Smaller tractors work well for fruit farms because they are narrow and can fit between rows of trees. Big tractors work well on big farms because they have a lot of power. Powerful engines help pull heavy equipment.
- The power of tractor engines is described using

- There are different features on tractors to help farmers get their work done easier. Big rear tires help the tractor from being stuck in mud. Smaller wheels in the front make the tractor easier to turn. The place where the farmer sits is the cab. The cab is slightly higher so the farmer can see the fields well. Headlights help farmers work in rainy or foggy weather and at night.
- Farmers can hook up different kinds of attachments to the back of the tractor. A **disk** is an attachment that breaks up hard soil with heavy blades to prepare

the soil for planting. A **seed drill** attachment makes holes in the soil and drops seeds into the holes. Then it covers the holes with dirt. Tractors can also pull **balers**. This attachment gathers hay from the field and wraps it into bales.

- A **mower** attachment is great for cutting tall grass. Farmers can also attach a bale fork to the front of the tractor to pick up bales of hay.
- Tractors can also pull **harvesters**. A harvester, like a sugar beet harvester, separates the leaves and the stalks from the roots of the sugar beet. The roots are shipped to factories to make sugar.



Tractor timeline

- **1837** John Deere company is founded
- **1855** James Oliver invents & patents chilled steel plow
- **1863** Henry Ford is born
- **1868** Deere & Co. incorporated
- **1892** Rudolph Diesel develops new engine while still a student
- **1902** Hart-Parr makes its first gas-traction engine
- **1910** Caterpillar trademark is registered for tractor line
- **1917** Henry Ford incorporates Henry Ford & Son Tractor, Co. and begins manufacture of Fordson tractor
- **1921** Era of price wars between Ford and IH and tractor prices are slashed dramatically
- **1924** IH throws in free plow with every new tractor to bolster price war sales
- **1924** IH introduces Farmall tractor
- **1933** Deere elects to carry debtor farmers as long as necessary, building generations of loyalty
- **1934** IH introduces the W-40 and WD-40, the first 6-cylinder IH tractor and the first wheel-type tractor to be powered by diesel, respectively
- **1935** Rock Island discontinues tractor production
- **1937** Deere gross sales reach \$100 million
- **1941** World War II puts tractor production on the back burner
- **1945** John Deere AR and IH Farmall M
- **1947** Henry Ford dies
- **1947** Caterpillar moves from farm to construction equipment
- **1954** Last year of production of Deere Model D “Johnny Popper”
- **1978** Deere sales reach \$4 billion
- **1980s** Grain embargoes, high interest rates, plunging land values and strikes cripple IH
- **1993** Deere celebrates 75 years in tractor business
- **1996** Case creates Advanced Farming Systems (AFS), beginning with state-of-the-art yield-monitoring devices that use satellite technology to help farmers maximize productivity
- **2000** (July 19) Deere changes leaping deer trademark to appear stronger and more dynamic with a greater emphasis placed on the John Deere name. It is the first change in 32 years and only the 8th change in company history

Timeline courtesy of Sunnybrook Farm Museum, California

Decorate cupcakes with mini candy tractors!

Ingredients:

- 2 Hershey's Miniatures (the kind that look like bricks or gold bars)
- 2 Lifesavers Gummy Savers
- 2 mini Peppermint Patties
- 1 Starburst
- 1 Hershey's Kiss in silver wrapping for each cupcake

Frosting options:

Frost the cupcake with green frosting. Put coconut in a bag, add 3-5 drops of green food coloring, shake it up and sprinkle over the green frosting to look

like grass.

Another option is to frost the cupcake with white frosting and sprinkle it with graham cracker or Oreo cookie crumbs to look like dirt.

Directions for tractor:

- Unwrap one Hershey's Miniature and place it in the center of the cupcake.
- * Unwrap two mini Peppermint Patties and stand them up at one end of the Hershey bar, one on each side to make the large wheels in the back of the tractor.

- * Unwrap two Lifesaver Gummies and stand them up at the other end of the Hershey bar to make the two smaller front wheels.
- * Unwrap the Starburst and place it on the Hershey bar between the two Peppermint Patties.
- * Put the unwrapped Hershey Kiss on top of the Starburst using a little frosting as glue.
- * Cut the other mini Hershey bar in half and use frosting to secure it to the other end of the Hershey bar.

Make a mini 'tractor'! It moves without a motor!

Materials:

- Adult to help
- Wooden thread spool, thread removed
- Matchstick, the flammable part removed
- Toothpick
- Rubber band
- * Candlestick or soap

Directions:

Find a wooden spool and a bar of soap or a candlestick. Cut a piece of soap or the candle-

stick into the shape and size of a Lifesaver candy. Place the piece of soap or candle on one flat end of the spool and thread a small rubber band through the hole in the soap or candle and the spool. Insert the matchstick through one end of the rubber band to keep the rubber band from pulling through. Make sure the flammable part of the matchstick is removed.

Cut the toothpick slightly shorter than the diameter of the

flat end of the spool. On the other flat end of the spool, cut a long recess in the spool so that the toothpick fits snug and does not rotate. Place the toothpick through the other end of the rubber band.

Adjust the matchstick so that part of it goes past the edge of the spool. Use it to wind the rubber band until it is taut then place the “tractor” on the table. Watch it move!

Tractor word search

T I R E S S P K T Y N Y N P L
 P X I R J L T R Z R G L M K L
 Y Y O R O R A H E D F I E M I
 P F X W T C O T G A X B E I R
 O N T X T H S G N I L L U P D
 R E W O P E S R O H L E S P D
 P L R F V P F X E J S D I O E
 S L I R L L I T W M L B A W E
 E B A M A C H I N E R Y Y E S
 N H A N K W I P I M L A O R H
 I H O L T S V F O O I V F F W
 G M A I E I I T A W O E B U S
 N N E N N R N D Q E S A M L W
 E W V O A N T G F R C C K V Z
 B D H Y F W P Q J Q W O Y N U

BALER
 CAB
 DISK
 ENGINES
 FARMERS
 FIELDS
 HARVESTER
 HEADLIGHTS
 HORSEPOWER
 MACHINERY
 MOWER
 PLANTING
 PLOW
 POWERFUL
 PULLING
 SEEDDRILL
 SOIL
 TILL
 TIRES
 TRACTOR

Name _____

Address _____

City/State/Zip _____ Telephone (____) _____

Return to Kane County Farm Bureau, 2N710 Randall Road, St. Charles, IL 60174 by March 12, 2008 for your chance to win a box of pork chops!

March is:

- | | |
|--|--|
| National Celery Month | March 14
National Potato Chip Day |
| National Noodle Month | March 19
National Poultry Day |
| National Peanut Month | March 20
National Ravioli Day
National Ag Day |
| March 16-22 – National Ag Week | March 25
Pecan Day |
| March 1
National Peanut Butter Lover's Day | March 26
Spinach Day |
| March 2
National Banana Crème Pie Day | March 30
Turkey Neck Soup Day |
| March 4
National Pound Cake Day | March 31
National Clams on the Half Shell Day |
| March 7
National Cereal Day | |
| March 11
Oatmeal-Nut Waffles Day | |

Congrats!

Congratulations to Jim Gross of Hampshire. His name was drawn from the entries received for correctly completing last month's word search. For Jim's participation, he will receive one box of Italian Chicken Breasts. Thank you for reading the *Kane County Farmer*, and continue to watch each month for more great opportunities from the Kane County Farm Bureau!

EMERGENCY WELL & PUMP SERVICE

- Complete Well & Pump Service
- Well Chlorination & Disinfection
- Iron Filters • Reverse Osmosis • Water Softeners
- Well Drilling • State Licensed • Insured

PRAIRIE STATE WATER SYSTEMS

A Family Name Involved in Water For Over 50 Years

Sales & Service Repairs

FREE ESTIMATES

VISA

FAST LOCAL SERVICE

St. Charles
(630)377-5150

Elgin
(847)742-9191

Maple Park
(630)365-4242

Celebrate spring at Touch-A-Tractor

Kane County Farm Bureau's one-of-a-kind farm-city event returns March 28 & 29 to the Farm Bureau in St. Charles. Touch-A-Tractor was recognized by the American Farm Bureau Foundation in 2007 as one of the top agricultural education and promotion programs in the nation.

The Farm Bureau welcomes everyone to come out to this two-day event. We will celebrate agriculture and Spring, enjoy hands-on activities and free giveaways for kids and visit with local farmers who will be on hand to answer questions about farming and the operation of the farm equipment and antique tractors that will be on display.

There is no cost for admission and children will be allowed to see large farm machines, tractors and combines up-close. There will also be a free drawing (for kids 8 and under) to win a shiny new red International pedal tractor.

Rounding out the event for kids will be a pedal tractor "corral", scavenger hunt and farm animal zoo.



The public is invited to see farm equipment up-close at the Farm Bureau's award winning Touch-a-Tractor event, March 28 & 29 in St. Charles.

Volunteers and local FFA members will be on hand both days preparing burgers and hot dogs as a fund raiser for the Kane County Farm Bureau Foundation's Scholarship Programs. The public is also encouraged to bring in non-perishable food items for local food pantries. Food items will be exchanged for tickets toward free food and beverages at the event.

At the conclusion of the

event on Saturday, March 29, the Kane County Farm Bureau Foundation will draw the winning ticket in its second "Winner's Choice" Tractor Raffle. The winner will choose between a restored 1952 John Deere B, a NEW Cub Cadet LT 1046 Lawn Tractor or a cash prize. The second place winner will receive a Cub Cadet Model 989 21" 5 horsepower walk-behind mower. Tickets for the drawing will be available throughout the event.

All proceeds will go toward the Kane County Farm Bureau Foundation college scholarships and Ag-in-the-Classroom programs.

Touch-A-Tractor will be open to the public Friday, March 28, from 9am to 5pm, and Saturday, March 29, from 10am to 4pm. at the Farm Bureau, Randall Road at Oak Street in St. Charles. For more information call 630 584-8660 or go to www.kanecfb.com

AG LITERACY CORNER

By Suzi Myers



Spring arrives this month and I, for one, am very happy to see it arrive. We have many programs coming up: Ag Days, Touch a Tractor, Bookmark Contest, and our new SPROUTS program. It will be a very busy and educational season.

The 11th and 12th of February was the Illinois Ag in the Classroom Conference in Mt. Vernon, IL. The 11th was a day of sharing some of our best ideas. Each county Ag Literacy Coordinator had three minutes to tell the group about their "minute miracle". I came home with a lot of new ideas or different slants on the old tried and true activities. I have already used some of these new ideas and am sure I will use even more in the future.

The second day was full of different sessions we could attend. I learned about nutrition, which coincidentally happened to be the topic of the first call I had from a teacher when I returned to the office, so that was a good thing. I also learned more about DNA and the various aspects of that, as well as how it concerns us in today's society.

My favorite breakout session concerned a classroom project where the students were given "money" and various criteria to make their own farms. The students actually created a three

dimensional farm as they proceeded through the class work. Their farms had various buildings, as well as animals with fencing and fields for crops. The students learned about area and perimeter, cost of farming, and how their choices affected the size of their farms and how much money they would have to spend. This session was taught by the Illinois Teacher of the Year who does the project with her students from March to May. It is a multi-disciplinary unit, so really caught my interest. If any of you teachers are reading this and want more information, please call me.

We also learned some horse activities, which were very interesting and I know will be used by a lot of students.

It was a busy two days full of interesting activities to use with teachers and their students. Most of these activities were hands on and quite easy to incorporate. I'm sure some of these activities will be spotlighted at our booth at the Kane County Fair this summer.

Remember to visit us on the 28th and 29th of March for the Touch a Tractor program here at the Farm Bureau. It will be two days full of children learning about farm machinery and having fun exploring all the equipment.

Happy spring!

FREE Pedal Tractor Drawing

To complement the Kane County Farm Bureau Foundation's "Winner's Choice" Tractor Raffle fundraiser, a FREE pedal tractor will be given away to one lucky kid

who attends Touch-A-Tractor, or returns the form below by March 29. The pedal tractor drawing is open only to children 8 and under. Entrant's age must appear on the form at right.

The winner will be drawn March 29 at the Kane County Farm Bureau's Touch-A-Tractor event, at approximately 3 p.m. Winner need not be present to win.



Enter your kids(s) (8 & under only) to win this pedal tractor FREE from the Kane County Farm Bureau. And be sure to bring them to Touch-A-Tractor, March 28 & 29, at the Farm Bureau in St. Charles.

FREE Pedal Tractor Drawing

(for children 8 and under, entrant's age must appear on the form below)

Please enter me in the Kane County Farm Bureau's FREE Pedal Tractor Drawing.

Name _____ Age _____

Address _____

Telephone (_____) _____

Return by March 29 to:

Kane County Farm Bureau, 2N710 Randall Road, St. Charles, IL

Got an antique tractor or farm truck?

Farm Bureau is seeking tractors, both modern and antique, to join the combine, planter and tillage equipment used for Touch-A-Tractor. Also needed are trucks of all sizes and volunteers to explain how the farm equipment works at this Farm-City event. Do you have antique farm tractors or equipment? A farm truck you can spare for the weekend?

Those who provide equipment to display will also receive an invite to an After Hours Mixer for local public officials.

If you are interested in volunteering or you have tractors or equipment to share, please fill out the accompanying form and return it to us by March 22.

Help make Touch-A-Tractor a success.

Contact me about volunteer opportunities on
 Fri., Mar 28 Sat., Mar 29

I would like to bring the following farm equipment to display.

Please provide a brief description of the equipment. For tractors/combines, include year, make, model and horsepower.

Name _____

Address _____

City _____ St _____ Zip _____

Phone _____

Clip and return to Kane County Farm Bureau, 2N710 Randall Road, St. Charles, IL 60174

Last chance!

Tickets are still available for the Kane County Farm Bureau Foundation's "Winner's Choice" Tractor Raffle!

Proceeds from the raffle benefit Foundation College Scholarship and Agricultural Literacy programs. In 2007, the Foundation awarded nearly \$25,000 in scholarships to help send 15 local students to college.

This year's "Winner's

Choice" Tractor Raffle prize is a choice of a 1952 John Deere Model B, a NEW Cub Cadet LT 1046 Lawn Tractor or \$2,500 in cold hard cash. Second prize is a Cub Cadet model 989 21" 5 hp walk behind mower.

Tickets are \$10 each or 3 tickets for \$25. The tickets are available in the Kane County Farm Bureau office, 2N710 Randall Road, St. Charles, from

Farm Bureau directors listed on page 2 or at Touch-A-Tractor, March 28 & 29. The drawing will be held March 29 at Kane County Farm Bureau's third annual Touch-A-Tractor Open House.

For more information on the raffle, Scholarship programs or other Foundation programs and services, contact Steve Arnold at 630 584-8660.

Book of the Month

Can you think of a better book for the book of the month than one about tractors, especially when Touch a Tractor is being held at the Kane County Farm Bureau March 28th and 29th?

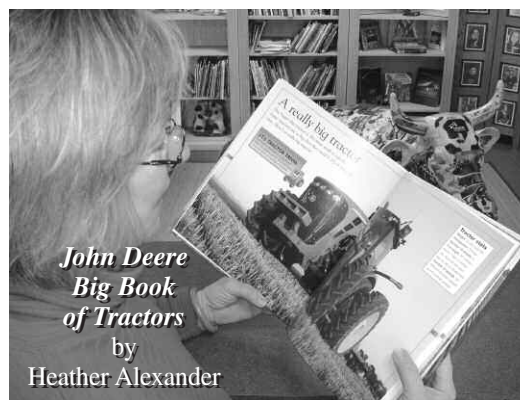
Did you know the first tractors had metal wheels with no tires? Or that a tractor can weigh as much as five elephants? Or that it can pull as much as 500 horses can? All you've ever wanted to know about a tractor is found in this book. It covers all the types of tractors, the different parts of a tractor, the

engine, inside the cab, wheels and tires, and how one is made. There is also a history of the tractor and the various jobs it does on the farm in various seasons as well as tractor safety.

One of the best parts of this book is the photographs. Each page is filled with many photos, making the book easy to use with many different ages of readers. Even the youngest child can learn about the tractors by looking at the photos.

Come in and borrow this book, I'm sure you won't be

appointed with it. Then be sure to join us for Touch a Tractor on March 28th and 29th, where your children will have the chance to be close to and explore the farm machinery.



Recruiter of the Month

Each month, Kane County Farm Bureau honors the person or persons who sign the most members into our organization. This month we would like to congratulate Michael O'Brien. Michael has signed nine new members to be named top recruiter for January 2008.

Michael has been an agent with COUNTRY's St. Charles Agency since January 2004. Michael serves clients from his office at 201 Houston St, Suite 120, Batavia, 60510. You may reach Michael at 630-879-6011.

As a token of our apprecia-

tion, Michael will receive a box of our pork chops. Thank you, Michael, for your continued support of Kane County Farm Bureau and congratulations on your success.



Michael O'Brien

Conservation Catalog available from SWCD

Landowners interested in conservation plantings for windbreaks, shade, erosion control, wildlife or groundwater recharge should contact the Kane-DuPage Soil and Water Conservation District for a copy of the 2008 Conservation Catalog. The catalog is an annual service of the District that

allows landowners to purchase deciduous trees and shrubs, and plant packages for prairies, ponds, stream banks and butterfly gardens. The District also offers rain barrels in conjunction with its annual tree sale and has a wide assortment of books about conservation.

Order deadlines and pick-up

dates and location for the rain barrels, trees and shrubs and prairie plants vary but with the earliest deadline fast approaching on March 7. For more information on products, prices and ordering, please contact the Kane-DuPage Soil and Water Conservation District at 630 584-7961 extension 3.

USDA announces availability of value-added producer grants

USDA Rural Development offers value added grants to producers, producer groups, farmer or rancher cooperatives, and majority-controlled producer-based business ventures to help them develop and market value added products. \$18.4 million in value added funding available. The application deadline is March 31, 2008.

Planning grants can be used for activities such as business plans, feasibility studies, marketing plans, and fees associated with setting up a value-added venture. Working capital grants can be used for labor, inventory, office equipment and fees for marketing and consulting.

Rural Development staff can help applicants fine-tune their

requests and improve their chances in the nationally competitive grant program.

Illinois has awarded \$27 million to agricultural interests in the last several years. For more information on Value Added grants, visit www.rurdev.usda.gov/rbs/coops/vadg.htm or call 217-403-6211.

What's new in the COUNTRY agencies?

St. Charles Agency, Richard Bristow, Agency Manager

Deb Stob has been named Agent of the Month for January 2008 in the St. Charles Agency. Deb has been an agent with COUNTRY since July 2001. She serves her clients from her office in the Farm Bureau building at 2N710 Randall Road in St. Charles. You may reach Deb at (630) 762-1327.

Aurora Agency, Jackie Meier, Agency Manager

Jeff Larson has been named

Agent of the Month for January 2008 in the Aurora Agency. Jeff began his career with COUNTRY Insurance & Financial Services in December 2003. He serves his clients from his office at 2430 West Indian Trail, Suite 202, Aurora, 60506. You may reach Jeff at (630) 907-8888.

Elgin/Schaumburg Agency, Jack Smith, Agency Manager

Bernie Gaston has been named "Career Agent of the Month" for January 2008. Bernie has been an agent with

COUNTRY since February 2002. His office is located at 763 S. Eighth in West Dundee. His phone number is (847) 428-7147.

David Kujawa has been named "Employee Agent of the Month" for January 2008. David has been an agent with COUNTRY since December 2005. His office is located at 1814 Grandstand Place, Elgin, 60123. His phone number is (847) 742-0001.

ings. This savings will allow you to have more fun on your vacation.

For more information on travel discounts or other Farm Bureau membership benefits, give me a call at 630 584-8660 or go to our website, www.kanecfb.com and click on Benefits/Services.

discovered that over the past year, members cumulatively saved nearly \$80,000 on 10,400 room nights. Members just like you booked rooms for an average of \$50 per night, saving \$7.64 off regular room rates. It's easy to save. Simply make advance reservations, give your member-only discount number, and sleep in comfort and sav-

ents will be decided at the April Kane County Corn Growers meeting, and the scholarship presentations will take place in May. If you have any questions, you may contact Kane County Corn Growers President Don Young at 815-758-2913 or the Kane County Farm Bureau at 630-584-8660.



MEMBERSHIP MATTERS

By Beth Dawson

I hope everyone is looking forward to spring. Spring break will be happening for some this month. If you are planning a vacation, remember to use your Farm Bureau discount on car rentals and hotels. From budget savers to five star hotels, you will be surprised at how much you save. In fact, Farm Bureau pulled out the calculator and

Corn growers

(continued from page 2)

County Corn Growers. Applications are due by April 1, 2008, and are available at the Kane County Farm Bureau, 2N710 Randall Road, St. Charles. The scholarship recipi-

CLASSIFIED ADS

FOR SALE

986 International Tractor, 4544 hours, new engine, runs great, \$9,000 OBO. Call: 815-895-8955

Freezer Beef for sale, medication & hormone free, raised from crops grown on the farm. Call: 847-697-2538

2 Balers, Tetter, Mower, Rakes, and Wagons and Seeder. Retiring. Call: 847-464-5120

Straw; oats; hay; ear corn; barley straw, good for natural control of pond scum. Kenyon Bros. ask for Mike - Call: 847-741-1818

Parakeets & cage - 3 beautiful parakeets with large, black cage & all accessories Call: 630-466-0542

IH 3514 Loader Tractor, Hydro on floor, PTO & 3-point. Good condition Call: 815-827-3285

Show wether goat and 4-H doe sale. Saturday, April 5 2008 at Lee County Fairgrounds, Amboy. Begins at Noon. Call 847-212-6255

Firewood - seasoned oak \$90 a face cord, mixed hardwoods \$80

a face cord - 2 pick up caps measuring 76 x 62; one fiber glass (\$100) one work cap with three doors (\$225) OBO. Call: 630-652-6339 cell; 847-695-6273 home

1997 Ford Crown Victoria, excellent condition, \$4,500 OBO. Call: 847-464-5155

SERVICES

2007 CSA vegetable subscription program. Naturally grown, weekly farm pick-up or delivery. Web: erehwonfarm.com or call Tim Fuller Call: 630-365-3741

Design In Time, a professional home staging firm, can help put that "sold" sign in your front yard. Call: 847-683-9340

Nelson Landscape and Hauling: Bobcat work, pulverized dirt, gravel, sod, and misc. odd jobs. Call: 630-365-2392

FOR RENT

For Rent - triplex, near Randall, 2 bedroom, 1 Ω bath, 2 car attached garage. All new. \$1,269/mo. Call: 847-337-3600

CLASSIFIED ADS
KANE COUNTY FARM BUREAU MEMBERS

Classified advertising rates: 20 cents per word/\$10 minimum. DISCOUNTS for members: Associate members, 20%; Voting members, 30%; PLUS members, 40%. Payment in advance is requested. Voting members receive limited free classified advertising of farm commodities and farm equipment. Ads are due by the 15th of every month for the next issue. No advertising (classified or display) for financial or insurance services will be accepted.

Name _____
Address _____
City _____ State _____ Zip _____
Category: Circle One: For Sale, Wanted, For Rent, Services, Other: _____
Ad copy: _____
Member No. _____ Phone No. _____

Complete the above form and mail to: Kane County Farm Bureau, 2N710 Randall Road, St. Charles, IL 60174 or fax to (630) 584-0023. Non-member ad rate: payable with ad, \$10.00 - 20 word maximum per ad.

Capital Agricultural Property Services, Inc.
630-434-1838

LAND FOR SALE

Call Doug Deininger:
815-439-9245
298± ac. Kankakee Co., IL
60± ac. **Sale Pending**
462± ac. Grundy Co., IL New Price!
78± ac. Grundy Co., IL
78± ac. LaSalle Co., IL New Price!
225± ac. LaSalle Co., IL New Price!
45± ac. LaSalle Co., IL
140± ac. Stephenson Co., IL

Call Doug Lakamp:
217-359-3318
411± ac. Ogle Co., IL
158± **Sold** IL

Call Chip Johnston:
815-875-2950
594± ac. Dekalb Co., IL
340 **Sale Pending** IL
84± ac. Henderson Co., IL
230± ac. Dekalb Co., IL
80± ac. Dekalb Co., IL New Price!
32± ac. Bureau Co., IL

Call Bill Green:
630-761-8143
10± ac. Kendall Co., IL
238± Rock Island Co., IL

visit our website at www.capitalag.com

Touch-a-Tractor

(Bringing the Farm to the City!)

Farm Animal Zoo

See newly hatched baby chicks!

Kids Scavenger Hunt & Pedal Tractor Corral

Food & beverage available or bring non-perishable foods & exchange for meal tickets in a drive for local food pantries

Food & Beverages Available

Kid's Games

Free! Pedal Tractor Drawing for Kids 8 & under

New & Antique Farm Equipment

Friday, March 28
9am-5pm

Saturday, March 29
10am-4pm 4pm Raffle Drawing

For this restored JD B Tractor or a new Cub Cadet LT1046 riding mower, and a free drawing (for kids 8 & under) for this Farmall Pedal Tractor.

at the KCFB, Randall Road at Oak Street, St. Charles
Call the Kane County Farm Bureau at 630-584-8660 for additional information.

Federal crop insurance deadline

Illinois farmers have until March 17 to sign up for spring Federal Crop insurance policies, according to COUNTRY Insurance & Financial Services.

"Grain prices along with input costs increased to historically high levels this year. It is vital for farmers to consider Federal Crop insurance to protect their grain assets and protect themselves against a potential price decline," says Sheri Bane, director of commercial/agribusiness for COUNTRY. "Farmers can also reduce risk by developing a grain marketing plan. COUNTRY agents can help farmers secure market analysis and grain contracts through AgriVisor LLC, a joint venture of Growmark Inc. and Illinois Farm Bureau."

COUNTRY offers the following Federal Crop Revenue and Bushel Protection Policies to help meet the needs of farmers:

- **Revenue Policies:** Provide protection from low yields and low market prices. Revenue Policy products include: Revenue Assurance (RA), Crop Revenue Coverage (CRC), Income Protection (IP) and Group Risk Income Protection (GRIP).

- **Bushel Protection Policies:** Provides protection against loss of production. Bushel Protection Policy products include: Multiple Peril Crop Insurance (MPCI), Catastrophic Risk Protection (CAT) and Group Risk Protection (GRP).

"Federal Crop insurance is a complex product and farmers have different needs," says Bane. "The right policy for one farmer may not be the right one for another. COUNTRY recommends farm operators or managers meet with certified Federal Crop representatives to compare the various products, and decide which policy and options are best for their situation."

COUNTRY will offer a new pilot Biotech Yield Endorsement program for 2008, which provides a Federal Crop premium discount to farmers who meet specific program qualifications.

COUNTRY is among the top Federal Crop insurers in Illinois.

Farm Gate

(continued from page 4)

car with mud to its side view mirrors. I have proof in my high school scrapbook, where the spirit of March Madness is written in dirt instead of shoe polish. My car said "Go Bombers," "Elite 8" and "#1" in finger-stroke widths on the door, hood and bumper when our boys' basketball team went to state.

The softness of gravel roads makes moving farm equipment and hauling grain away from on-farm storage nearly impossible. When the road surface finally dries enough to make some dust, "field fever" begins for area farmers. Like most of common society, my family craves a steakhouse dinner, movie or shopping trip in early February. By late winter, though, the itch is to be in the field to get a head start for this year's corn and soybeans. The farmers become as anxious as expectant mothers past their due date.



WHAT'S HAPPENING?

By Merry Pitstick

Happy St. Patrick's Day - Happy Easter - Happy Spring!

Did you know ... Easter was originally a pagan festival and not related to religion? The ancient Saxons celebrated the return of spring with a huge fes-

tival commemorating Easte, their goddess of offspring and springtime. When the Christian missionaries encountered the tribes with their pagan celebrations, they attempted to convert them to Christianity.

It would have been suicide,

however, for the very early Christian converts to celebrate their holy days with festivals that did not coincide with celebrations that already existed. In order to avoid deadly consequences, the missionaries decided to spread their religious message slowly by allowing them to continue to celebrate pagan feasts, but to do it in a Christian manner.

Coincidentally, the pagan festival of Easte occurred at the same time of year as the Resurrection of Christ. Therefore, it made sense to alter the festival to make it a Christian

celebration. The early name, Easte, was eventually changed to its modern spelling, Easter.

The Easter Bunny is also not a modern invention. This symbol, too, originates with the pagan festival of Easte. Since she was the goddess of offspring, she was worshipped through her earthly symbol, the rabbit. Therefore, the Easter Bunny has its origin in pre-Christian fertility lore. The Hare and the Rabbit were the most fertile animals known, and they served as symbols of new life during the spring season.



PICK UP HOURS
MONDAY
Mar. 24, 2008
4 pm to 6 pm

KANE COUNTY FARM BUREAU

BULK PACK FROZEN FRUIT & VEGETABLE SALE

for your home freezer processing

READ BEFORE ORDERING

1. Fill out the order form below and return by mail before March 11, 2008.
2. Mail to: Kane County Farm Bureau, 2N710 Randall Road, St. Charles, IL 60174.
3. For information and late orders, phone Merry at 630-584-8660.
4. Pick up Monday, March 24, 2008 at Kane County Farm Bureau, 2N710 Randall Road, St. Charles, IL.
5. In the event of causes beyond our control, brands, quantities, and prices are subject to change.
6. Orders must be paid in full at time of pick up by CASH or CHECK made payable to **KANE COUNTY FARM BUREAU**. There will be a \$30.00 service charge on returned checks.
7. Next sale date September 30, 2008.
8. Make a copy of your order for your records.

----- Cut Here ----- Retain the above for pick up information ----- Cut Here -----

YOUR FARM BUREAU MEMBER NO. _____ **ORDER FORM** **MAR. B**

Please fill in _____ (Name) _____ (Address) _____ (Zip) _____ (Phone)

*** MARCH SPECIALS ***			
QTY.	ITEM	REG. PRICE	SALE PRICE
805	Sausage Patties (DiRusso's) - 16/4 oz. - 4#	9.80	9.00
878	40 Pizza Bagel Smackerz (mini size) - 2#	11.40	10.00
392	Fajita Vegetable Mix - 4 1/2# bags - 8# IQF	16.80	15.00
979	Chocolate Cream Pie Slices - (IW) 24/2.6 oz	15.20	13.00
397	Green Beans - (6/2# bags) 12# IQF	19.80	17.00
789	Meatballs Italian Style, beef (DiRusso's)	16.90	16.00
362	Calif. Blend Vegetables - (6/2# bags) 12# IQF	24.50	23.00
759	Chicken Fryz/Stix - Tyson-boneless strips chicken breast	20.50	19.00
329	Tropical Fruit Mix - 4/2 1/2# bags - 10# IQF	29.40	28.00
078	Berry Patch Mix - 4/40 oz. bags of mixed fruit-10# IQF	37.80	36.00

PIZZAS			
796	Pizzas, pepperoni - 24/6.39 oz. ea.		14.80
576	Pizza Sticks - Albie's, stuffed with pepperoni/100% mozzarella cheese		21.90

** SLIPS, GOOFS & OVER RUNS **			
526	Blazing Hot Chicken Wings - Approx. 50 ct.-5#	15.90	14.50
745	Potato Wedges - season coated - 6/2# boxes/12#	23.90	22.60
544	French Toast Sticks, Bakeable - 8/2# - 16#	26.40	19.80
777	Chicken Breast Strips - breaded - 10#	27.30	22.80

SAMPLERS			
917	Fruit Pops - 36/1.5 oz. Individ. Wrapped	16.20	14.80
153	Fruit Variety Pack - 10# - IQF	26.80	25.30
476	Vegetable Variety Pack - 11# IQF	23.30	19.40
797	Steakwich - 100% Steak Slices - 22/3 oz. - 4#	18.90	17.80
502	Pizza Patty Melt Burgers w/Mozzarella Cheese	28.90	27.80
969	Cinnamon Rolls - Iced Gourmet-Heat & Serve - 6 OZ./6 PER BOX	10.50	9.80

VEGETABLES			
342	Asparagus Cuts/Tips (1/2 1/2# bag)	2 1/2# IQF	6.20
457	Sugar Snap Peas (5/2# bags)	10# IQF	22.80
440	Onions, diced (4/2 1/2# bags)	10# IQF	13.50
435	Mushrooms, sliced (Not Brd.) (4/2 1/2# bags)	10# IQF	28.50
340	Asparagus Cuts/Tips (4/2 1/2# bags)	10# IQF	23.90
419	Baby Lima Beans (4/2 1/2# bags)	10# IQF	19.50
353	Broccoli Florets (heads only) (6/2# bags)	12# IQF	25.40
734	FORDHOOK Lima Beans (4/2 1/2# bags)	10# IQF	21.80
468	Stir Fry Vegetables (6/2# bags)	12# IQF	23.50
733	Brussels Sprouts (6/2# bags)	12# IQF	22.70
349	Broccoli Cuts (6/2# bags)	12# IQF	18.80
700	Carrots, baby whole petite (6/2# bags)	12# IQF	21.90
463	Stew Vegetables (4/2 1/2# bags)	10# IQF	15.80
725	Cauliflower (6/2# bags)	12# IQF	19.90
380	Corn, yellow (6/2 1/2# bags)	15# IQF	21.80
447	Peas (6/2 1/2# bags)	15# IQF	21.80
428	Mixed Vegetables (6/2 1/2# bags)	15# IQF	21.80
487	Corn, white (super sweet variety) (6/2 1/2# bags)	15# IQF	24.40

POTATOES			
546	French Fries - 3/8" st. cut (6/5#-30#)		26.50
742	Hash Brown Potatoes - Shredded, loose - 6/3# bags	18#	19.90

MEATS			
779	Chicken Breast (Jones Poultry) - (SKINLESS/BONELESS/NOT BRD./NOT CKD) - (4 to 6 oz. sz.) (3/2 1/2# Bags)	7# 8 oz.	30.90
769	Chicken Patties - (All White Meat-Breaded) Cooked (60/3/4 oz.)	14#	41.90
500	Hamburger Patties - 80/20% - 20/4 oz.	box 5# IQF	21.40
810	Italian Sausages - DiRusso's (4/1#) (20 CT./4 OZ.)	box 5#	15.10
501	Beef Sirloin Chopped - 85/15% - 15/5.3 oz.	box 5# IQF	24.20
794	Country Fried Steak/Fritters - Brd. - 3/1# 30 to box	10#	32.80
919	Jumbo Cheese Stuffed Shells-CKD/Just Heat & Serve 16/3 oz.	3#	14.20
807	Breakfast Link Sausages - DiRusso's - mild seasoned	2#12 oz box	7.90

FISH			
822	Pollock Fillets, skinless-2 to 4 oz. ea.-Not Brd.-Bake & Deep Fry	10# IQF	25.80
833	Mahi-Mahi Fillets - boneless-4/6 oz. ea. - bake 15 mins @ 350°	2# IQF	13.90
836	Tilapia Fillets - skinless/boneless (IW) 5 / 7 oz ea	5# IQF	27.10
829	Catfish Fillets - skinless/boneless - 5 / 9 oz ea	3# bag IQF	19.90
831	Perch (Breaded) - Deep Fry- random sizes	5# IQF	27.90
841	Shrimp - breaded/bakeable-31/40 ct - 450° / 10 mins	2# bag	21.80
564	Imitation Crab Meat - Prem. Quality/Fully Cooked	2 1/2# bag	8.90
843	Fish Sticks - cooked - heat & serve	3#	11.80

536	White Chocolate Cookie Dough - 48 ct/1 oz. - 3# box	16.00 value	9.50
	BAKE 350°/10-12 MINS		
	BUY One - Get One FREE		
562	Mint Chocolate Chip Cookie Dough - in 3# tub	16.00 value	9.50
	BAKE 350°/9-11 MINS		
	BUY One - Get One FREE		
600	Apple Spice Muffins, indiv wrapped - 48/2 oz.	21.50 value	19.90
	BUY One - Get One FREE (all in one box)		

NEW ITEMS			
852	Kluski Noodles - (1/2" wide/1/4" thick)	3# bag	8.20
838	Shrimp, tails on - cooked 51/60 ct. - ready to eat	2#	14.80
131	Cranberries, whole - (4/2 1/2# bags)	10# IQF	31.80
899	Pizza Puffs (sausage) indiv wrap - 8 ct./6 oz ea - micro/bake	3#	13.90
847	Sweet Baby Back Rib Sandishes - 8 ct./6.2 oz. ea.	5#	18.90
	Boneless/Cooked/Indiv. Wrap - Microwave 60/75 sec.		
939	Vegetable Egg Rolls - with Sweet & Sour Sauce - Kahiki		23.50
	Bake or Microwave - 4 to box/6 boxes = 24 ct. - (0 GRAMS TRANS FAT)		
586	Popsicles - Kisko Freeze Pops - Mixed Flavors 12.00 value		8.00
	100/BOX (PACKED IN PLASTIC SLEEVES)		
	BUY One - Get One FREE		
504	Carrot Cake Roll Dessert (ready to eat)-Home Made 22 oz. ea	21.50 value	16.00
	BUY One - Get One FREE		
602	Apple Spice Roll Dessert (ready to eat)-Home Made 22 oz. ea	21.50 value	16.00
	BUY One - Get One FREE		
415	Yellow Corn on Cob, 18 cobs/ct/3"	21.80 value	20.00
	BUY 18 - Get 18 FREE (all in one box)		

FRUITS (Without Sugar)			
246	Red Tart Cherries *	(4/2 1/2# bags)	10# IQF 21.90
301	Strawberries, whole	(4/2 1/2# bags)	10# IQF 25.10
050	Apricots, Sliced	(4/2 1/2# bags)	10# IQF 26.10
166	Mixed Melon Balls	(4/2 1/2# bags)	10# IQF 21.50
027	Apples, Sliced	(4/2 1/2# bags)	10# IQF 14.80
179	Mixed Fruit ("Almost Mich.")	(4/2 1/2# bags)	10# IQF 24.50
	(Pineapple, peaches, apples, dark cherries, strawberries)		
204	Peaches, sliced Calif., firm	(4/2 1/2# bags)	10# IQF 26.80
227	Pineapple, chunks	(4/2 1/2# bags)	10# IQF 21.90
141	Black Sweet Cherries * Oregon	(4/2 1/2# bags)	10# IQF 32.80
100	Blueberries, cultivated	(4/2 1/2# bags)	10# IQF 41.50
124	Mixed Fruit (Calif)	(4/2 1/2# bags)	10# IQF 24.50
	(Honeydew, cantaloupe, peaches, red grapes)		
082	Blackberries (Marion)	(4/2 1/2# bags)	10# IQF 34.90
025	Spiced Apples ready for pies or cobbler (6/1 1/2# bags)	9# IQF	16.40
	SLICED IN A BAG (WITH SUGAR AND CINNAMON)		
269	Red Raspberries	(4/2 1/2# bags)	10# IQF 35.40
295	Strawberry Halves	(4/2 1/2# bags)	10# IQF 26.80
286	Rhubarb, cut (Michigan)	(4/2 1/2# bags)	10# IQF 16.90
065	Black Raspberries (Oregon)	(2/2 1/2# bags)	5# IQF 28.80
067	Black Raspberries (Oregon) SOLID PACK	6# S. Pk	31.80
154	Fruit for Pies (20 oz. bags)	10# IQF	24.90
	3 BAGS SL. APPLES, 3 BAGS RED TART CHERRIES, 2 BAGS SL. PEACHES		
244	Red Tart Cherries *	(Bulk)	30# IQF 52.90
013	Apples, Sliced	(Bulk)	30# IQF 30.20

FRUITS (With Sugar)			
255	Red Tart Cherries *	30# 5+1	47.90
254	Red Tart Cherries *	15# 5+1	32.90
316	Strawberries, Sliced (2/3 1/4# bags)	6 1/2# 4+1	14.20
198	Peaches, Sliced (2/4 1/2# bags)	9# 5+1	19.80

BEVERAGES			
858	Orange Juice 12/12 oz. (Concentrated) (1 can = 48 oz.)	1#	31.80
860	Orange Juice Cups - 100% Pure (Made up-72/4 oz.)	1#	24.70
864	Grapefruit Juice Cups - 100% Pure (Made up-70/4 oz.)	1#	24.30
867	Apple Juice Cups - 100% Pure (Made up-72/4 oz.)	1#	23.70
891	Fruit Punch Drink Boxes- 100% Juice-All Natural Sugar-32/6.75 oz.		16.30

APPETIZERS			
893	Hot Pockets (Pepperoni Pizza) Indiv. Wrapped - 24/4 oz.	6#	26.20
896	Hot Pockets (Ham & Cheese) Indiv. Wrapped - 24/4 oz.	6#	26.20
881	Burrito-- shredded beef w/beans, red & green peppers	7.5#	26.90
	BAKE OR MICROWAVE - 24/1.5 OZ.		
685	Pretzels (Penn Dutch)-- w/salt, regular size-50/2.5 oz. ea.		18.00
	BAKE - 350°/400° FOR 4 MIN. OR MICROWAVE- 2 BAGS OF 25		
909	Jalapeno Peppers - stuffed w/cheddar cheese	3# bag	19.90
	BRD./BAKEABLE-450° FOR 12/14MIN. - (approx. 42 ct.)		
903	Onion Rings- Batter Brd./bakeable-450° for 10/12 min.-(3/2.5# bags)	7.5#	25.80
905	Mushrooms - Batter Brd./bakeable - 450° for 10/12 min.-(2/2#)	4#	17.40
911	Mozzarella Cheese Sticks- Battered/Bakeable-approx 50 ct. (2/2#)	4#	27.10

BREADS			
927	Breadsticks, w/mozzarella cheese in center - 7" - 36/3 oz.		24.60
925	Garlic Bread - Foil wrapped-Heat & Serve (12/1# loafs)		28.60
942	Waffle Squares (Aunt Jemima) (144 ct.)		19.30
945	Egg Noodles (Reames)	3#	7.20

DESSERTS			
955	Belgian Cream Puffs - filled with vanilla cream		10.80
	50 MINI BITE SIZE - READY TO EAT - 22 OZ. BOX		
962	Chocolate Chip Cookies- Rich's - Ready to Bake (240/1 oz.)		33.80
965	Sugar Cookies - Rich's - Ready to Bake (240/1 oz.)		33.80
889	Danish Rolls (assorted mini bear claws (1.4 oz. ea - 30 to box)		18.50
	10 ALMOND, 10 WILDBERRY, 10 CARAMEL APPLE		
971	Peach Cobbler - Sara Lee -Ready to Bake-2/5# Trays	10#	25.80
974	Apple Dumplings w/cinnamon sauce (12 ct.)		20.80
592	Peach Dumplings w/vanilla sauce (6 ct.)		12.80
508	Apple Crisp - Ready to Bake - BAKE 375°/50/60 MIN.-(2/4# trays)	8#	19.80
534	Cherry Crisp - Ready to Bake - BAKE 375°/50/60 MIN.-(2/4# trays)	8#	19.80
983	Pie Shells - Wicks/GFS -18/9" - Not Baked		22.40

634 **RED CHERRY CONCENTRATE** 1 Quart 20.00
8 oz. makes 1/2 gallon; 2 Tbs per 8 oz. glass of water. 100% pure, very high in antioxidants, high levels of natural melatonin. For health information, please visit www.colomafrozen.com

IQF (INDIVIDUALLY QUICK FROZEN) 1# = NO SUGAR * PITTED \$ = NEW ITEM
S. PK. = MASS FROZEN (No Sugar) BRD. = BREADED CKD. = COOKED BKD. = BAKED

CHECK YOUR ORDER TO SEE IF ITEMS HAVE BEEN FILLED CORRECTLY.

UNITS	SALES